

TECHNICAL DATA

Video IN/module
Video OUT/module
Power supply/module
Consumption
Power ON
Protection fuse
Operating temperature
Protection rate
Weight
External dimensions (W x H x L - mm)
Accessories
Single card 1 IN/3 OUT
Rack case 19"-2U
Blank panel

EVD1M	EVD4M	EVD10M
1x BNC	4x BNC	10x BNC
3x BNC-1VPP	12x BNC-1VPP	30x BNC-1VPP
24VAC/12VDC (with reverse polarity protection)		
50mA (each card)		
LED (each card)		
supplied (each card)/250mA		
-20°C ÷ +50°C		
IP30		
125gr	405gr	1,170kg
74x50x88	230x50x88	RACK 19"-2U
Cod. EVD1/3		
Cod. RD10M		
Cod. BP1M (space: 1 slot)		



Modular video distributor
EVD Range

INSTRUCTIONS GUIDE

EVD1M

1 card

EVD4M

4 cards

EVD10M

10 cards, in standard
rack case 19"-2U



DISPOSAL OF YOUR OLD PRODUCT

Your product is designed and manufactured with high quality materials and component, which can be recycled and reused. When this crossed-out wheeled bin symbol is attached to a product it means the product is covered by the european directive 2002/96/ec. Pplease inform yourself about the local separate collection system for electrical and electronic products. Please act according to your local rules and do not dispose of your old products with your normal household waste. The correct disposal of your old product will help prevent potential negative consequences for the environment and human health.



BEFORE INSTALLATION AND OPERATION PLEASE READ THESE INSTRUCTIONS CAREFULLY.

Dear customer
we thank you for choosing our product.
Before installation and operation please read these instructions carefully.

DANGER AND SAFETY WARNINGS









This warning symbol means danger. you are in a situation that could cause bodily injury. Before you work on any equipment, be aware of the hazards involved with electrical circuitry and be familiar with standard practices for preventing accidents. **Before operating the machine, switch the power off.**



This warning symbol means that operating instructions and precautions **must be carefully followed in order to avoid bodily injury and equipment damage.**

IMPORTANT PRECAUTIONS AND WARNINGS FOR THE PROTECTION OF GOODS AND PERSONS

-  **Turn the power off before operating the equipment.**
-  Installation must be carried out by **qualified technical staff in compliance with current standards and regulations.**
-  **Installation and tools must be in compliance with the property and person security rules:** particular attention must be paid to the product use and working limits. To prevent risk of fire or electrica shock, **do not expose this unit to rain or humidity.**
-  Make sure that after repair and maintenance operations, all the necessary tests are carried out. Check through the necessary measurements **that any part where voltage is present is exposed and could therefore cause possible hazardous situations.**
-  In order to carry out the fixing, make the same amount of holes as indicated in the chosen support: **use the necessary fixing systems according to the type of wall on which the video distributor must be installed.**
-  Please do not make any changes to the product without previously contacting the manufacturer which will **formally** provide you with the necessary instructions.
- Please keep these instructions for future reference in case of service or mounting operations.

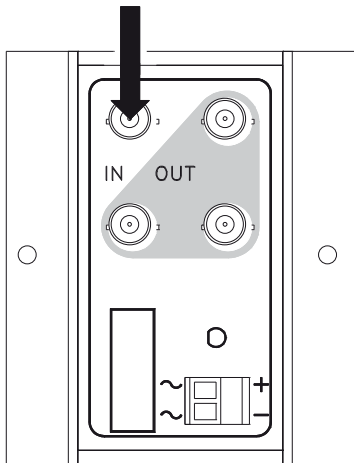
PRODUCT DESCRIPTION

This modular video distributor system is a user friendly item which can be adapted to satisfy all your needs. The basic EVD1/3 card has 1video IN/3video OUT balanced in order to obtain a standard video level (1vpp). Cascade connection possible in order to expand the video out capacity. Extremely versatile: each card indifferently accepts 24Vac or 12Vdc power, **with reverse polarity protection** when 12Vdc input power is used. Different ready to use versions are available: single module, 4 modules, 10 modules, inserted in an anticorodal anodized case (standard rack case 19"-2U).

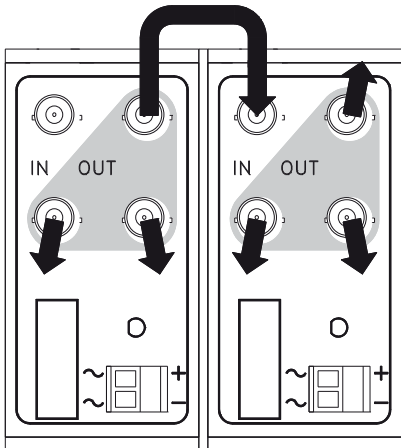
EVD range meets the requirements for the following regulations

EN 50130-4
EN 61000-6-3
EN 60065

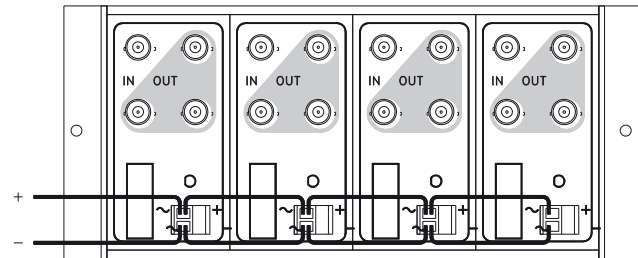
1. Connect the video cable to the video IN/BNC.



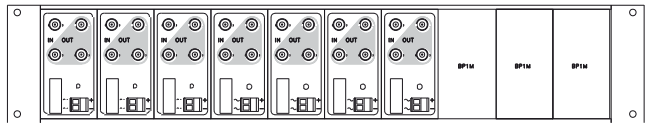
2. Connect the relevant cables dedicated to peripheral equipments (3 OUT max.) to video OUT/BNC. If necessary, connect more cards in cascade.



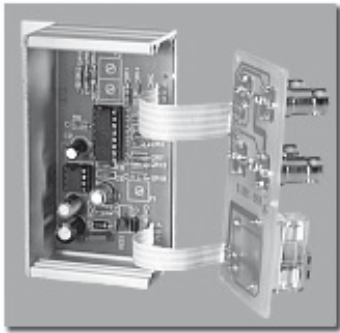
3. Connect a 24Vac or 12Vdc (stabilized) power supply to terminal block. if the power supply is 12Vdc, **strictly follow the indicated polarity.** A reverse polarity protection will avoid however damages to the equipment.



4. If a different modularity is needed (rather than standard versions of 1, 4 or 10 cards), an RD10M standard rack case and the necessary cards (EVD1/3) must be used. insert the circuit boards in the proper guides carefully and insert as many blank panels BP1M as possible, up to its maximum capacity (10 cards).



EVD1M detail



Before switching on the main voltage, make sure that all connections have been carried out.